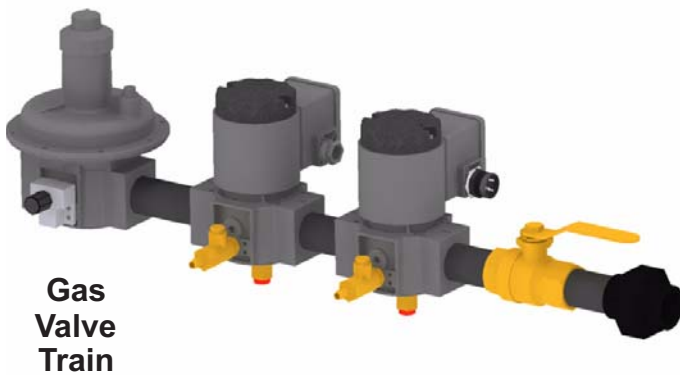


Eclipse PulsePak Valve Train Segments

CE Series
Version 1



CE PulsePak Valve Train Segments

Eclipse standard PulsePak valve train segments are pre-piped and tested modules. They are ready for assembly with other piping components to meet the provisions of the EN 746-2 standard for a complete gas valve train. Please refer to EN 746-2 for more information on additional components needed to meet the requirements.

Parameter		Specifications
Pipe Sizes	Gas	15 (1/2"), 20 (3/4"), 25 (1"), 40 (1-1/2"), 50 (2")
	Air	40 (1-1/2"), 50 (2"), 65 (2-1/2")
Ambient Environment	Designed for typical indoor industrial applications	
Ambient Temperature	-29°C to 49°C (-20°F to 120°F)	
Ambient Humidity	5% to 95% relative humidity	
Protection	IP54; NEMA12	
Process Fluid Media	Ambient air or clean fuel gas such as natural (methane), propane, butane	
Fluid Temperature	-15°C to 60°C (5°F to 140°F)	
Maximum Pressure	48 kPa (7 psi)*	
Electrical	120V or 230V, + 10% to - 15%, 50-60Hz	
Cycle Life	1,000,000 at a maximum of 100 cycles per hour	

* Maximum pressure for the complete assembly is based on a final test pressure at 150% of this rate. Refer to the individual ratings for maximum operating pressures.

Gas Valve Train

Component Details

Safety Shut-Off Valve

Electrically operated, normally closed, fast opening, fast closing, with visual position indication, flow adjustment, aluminum body and CE approval, IP54.

Ratio Regulator

Adjustable setpoint, low fire bypass, non-adjustable counter spring, vent limiter, inlet and outlet 1/4" test ports, CSA approved.

Flow Ratings

0.64 specific gravity natural gas at 15°C.

Size		Flow, m ³ /h	Flow, cfh
Millimeters	Inches		
15	1/2"	14	500
20	3/4"	28	1000
25	1"	42	1500
40	1-1/2"	85	3000
50	2"	142	5000

Gas Flows

For flows of a gas with a different specific gravity, use:
 $Q_2 = Q_1 * \text{SQRT}(0.64/SG_2)$

For gas at a different temperature, use:
 $Q_2 = Q_1 * \text{SQRT}(288/T_{\text{abs}2})$

Q_2 = new flow

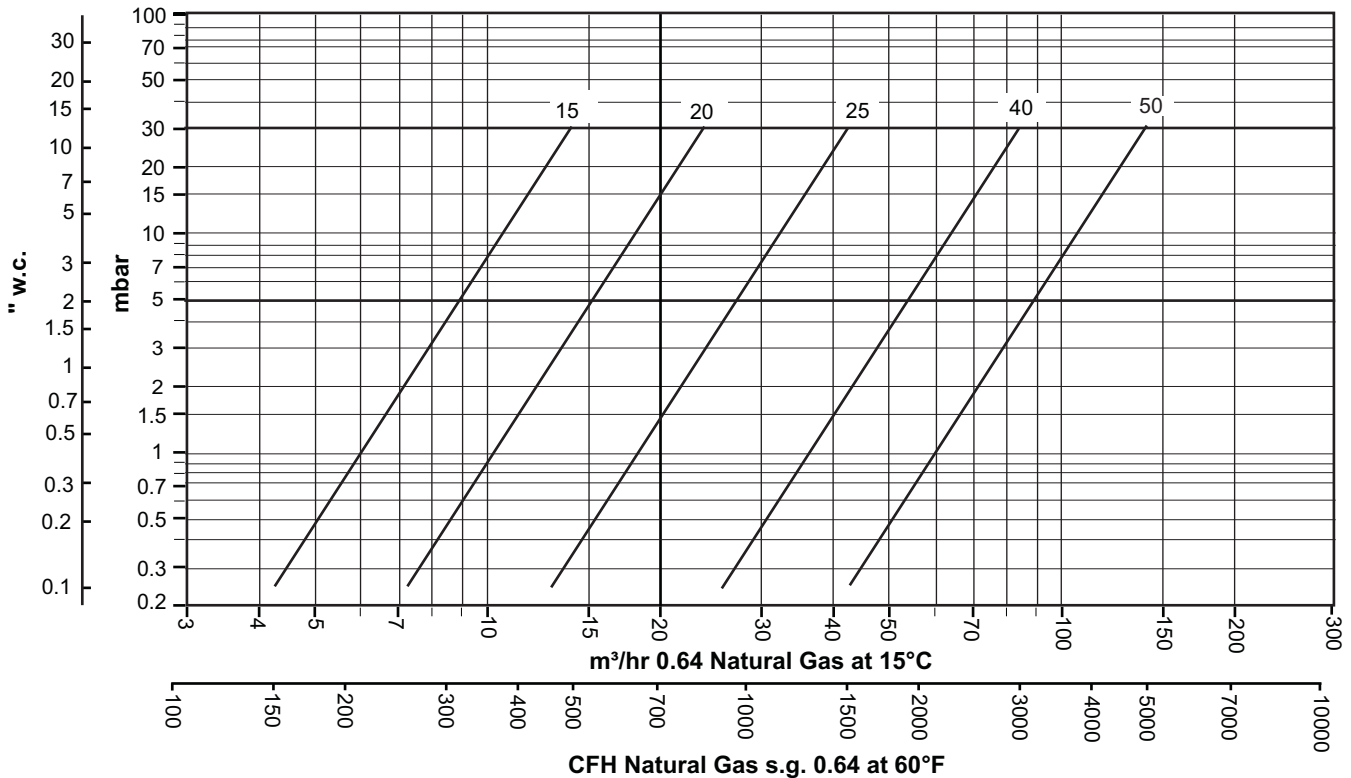
Q_1 = flow from the table

SQRT = square root function

SG_2 = specific gravity of new gas

$T_{\text{abs}2}$ = absolute temperature of the new gas (273 + °C)

Gas Capacity

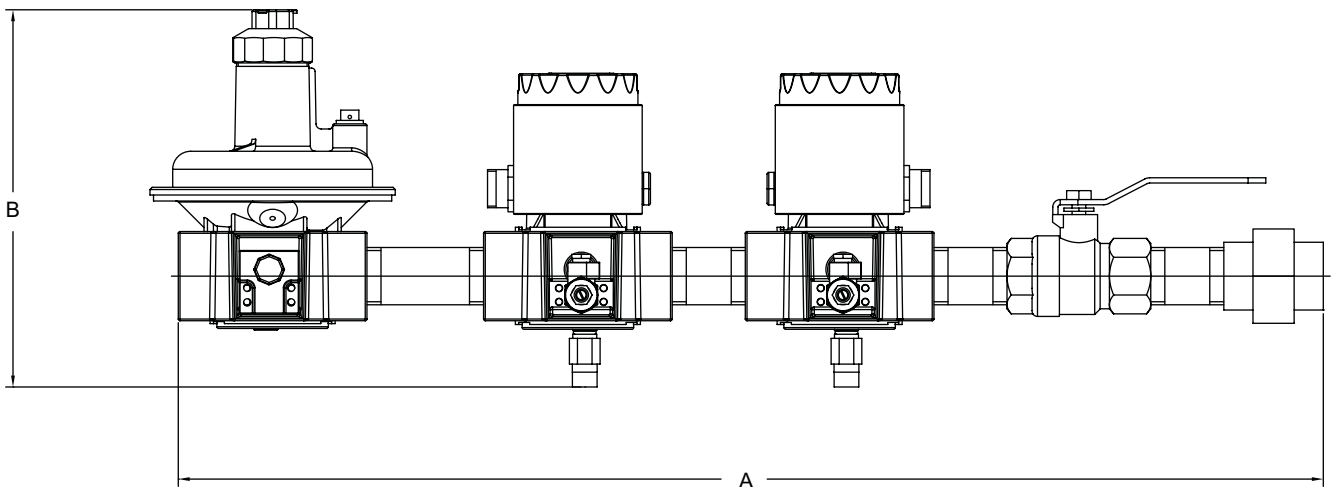
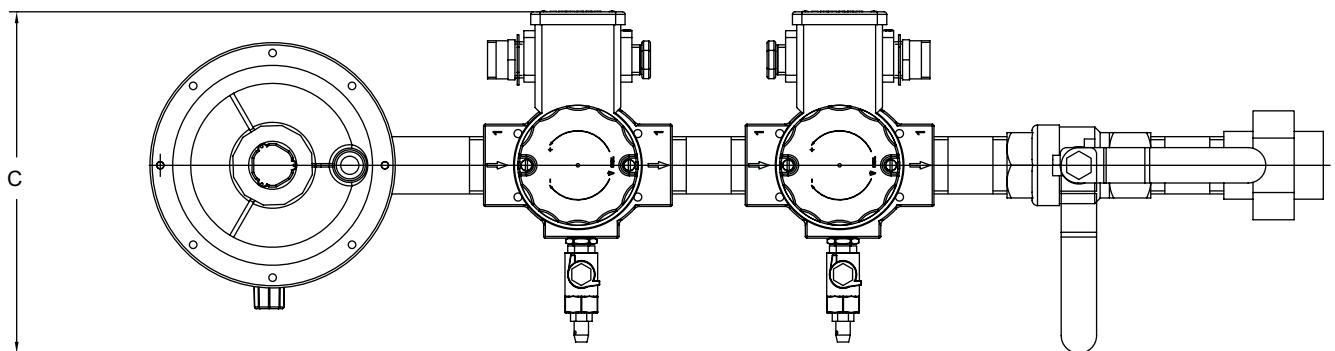


Gas Train Dimensions in millimeters (inches)

Part Number		Size	Flow Direction	Length A	Clearance Height B	Depth C	Weight, lbs (kg)
110V	230V						
10049387	10050407	15	Left to Right	474 (18.7)	172 (6.8)	174 (6.8)	4.9 (10.7)
10049392	10050412	15	Right to Left	474 (18.7)	172 (6.8)	174 (6.8)	4.9 (10.7)
10049388	10050408	20	Left to Right	558 (22)	196 (7.7)	188 (7.4)	8.1 (17.8)
10049394	10050413	20	Right to Left	558 (22)	196 (7.7)	188 (7.4)	8.1 (17.8)
10049389	10050409	25	Left to Right	668 (26.3)	220 (8.7)	193 (7.6)	9.9 (21.9)
10049395	10050414	25	Right to Left	668 (26.3)	220 (8.7)	193 (7.6)	9.9 (21.9)
10049390	10050410	40	Left to Right	818 (32.2)	284 (11.2)	215 (8.5)	12.3 (27.2)
10049396	10050415	40	Right to Left	818 (32.2)	284 (11.2)	215 (8.5)	12.3 (27.2)
10049391	10050411	50	Left to Right	946 (37.2)	343 (13.5)	250 (9.8)	19.7 (43.5)
10049397	10050416	50	Right to Left	946 (37.2)	343 (13.5)	250 (9.8)	19.7 (43.5)

Dimensions may vary 2% due to pipe thread engagement tolerances.

Sizes 1/2" to 2" (Left to Right Flow Shown)



Air Valve Train

Component Details

Control Valve

Electrically operated, normally closed, fast opening, fast closing with visual position indication, flow adjustment, aluminum body and CE approval, IP54.

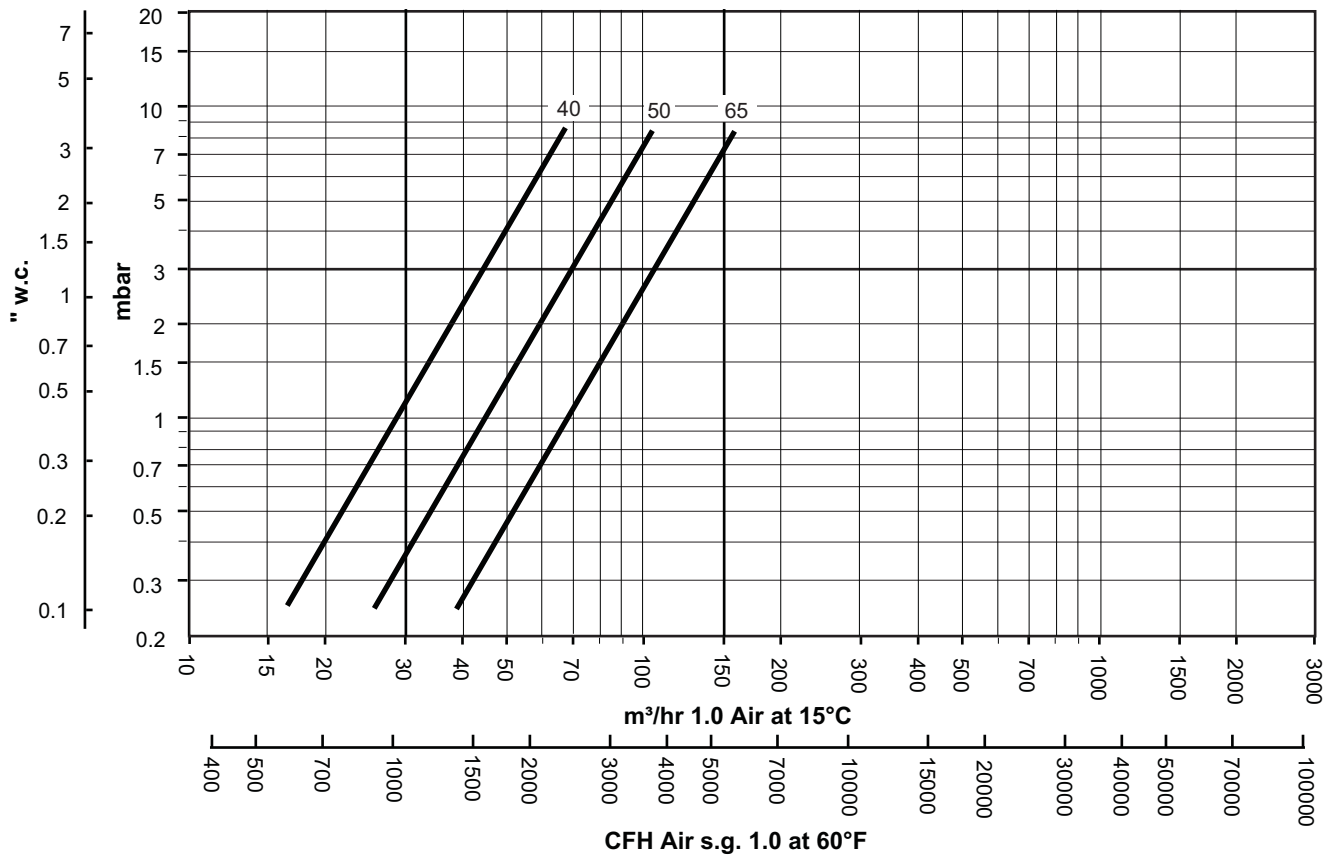
Flow Ratings

1.0 Specific gravity air at 15°C

Size		Flow, m ³ /h	Flow, cfh
Millimeters	Inches		
40	1-1/2"	65	2300
50	2"	110	3900
65	2-1/2"	159	5600

Air valves to be used with ambient combustion air only.

Air Capacity

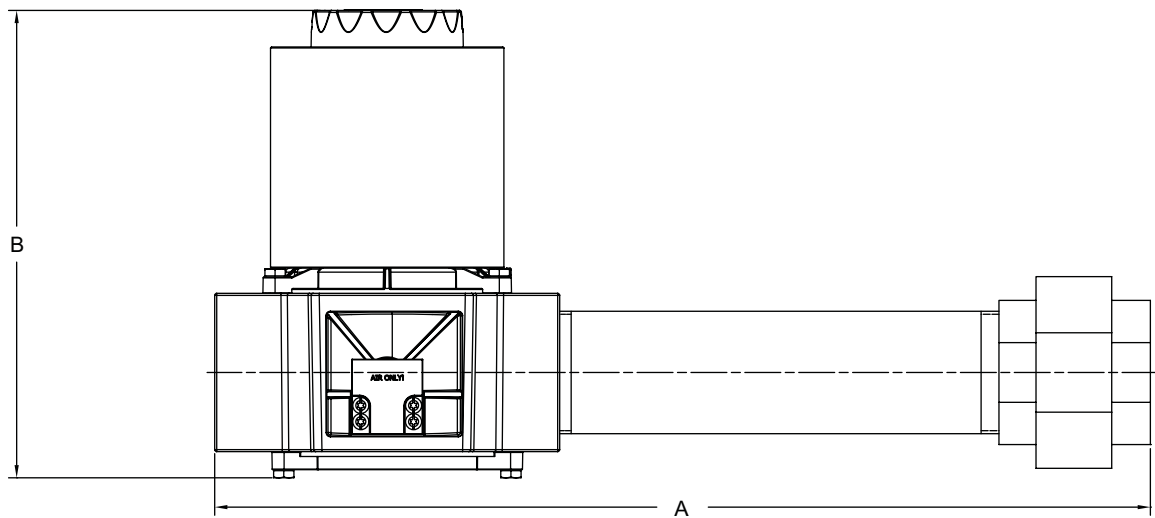
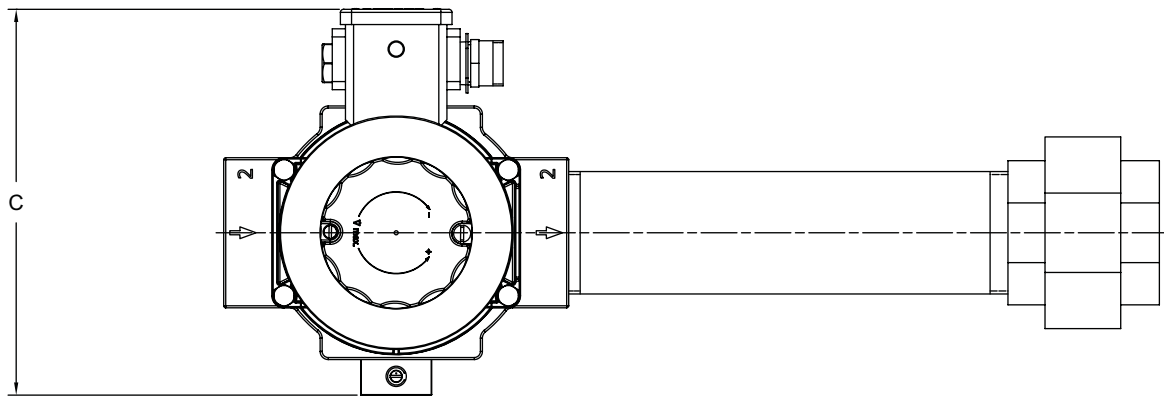


Air Train Dimensions in millimeters (inches)

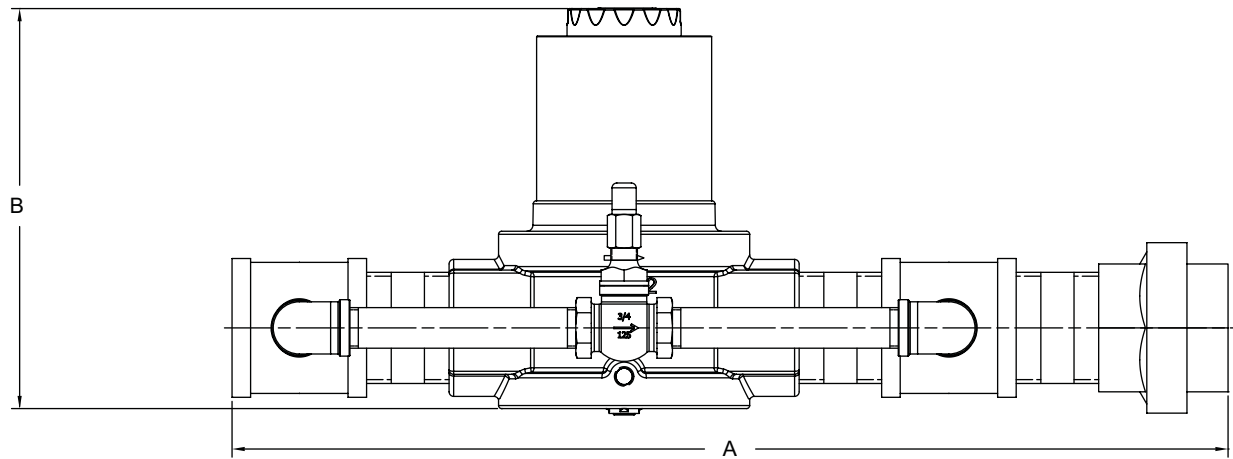
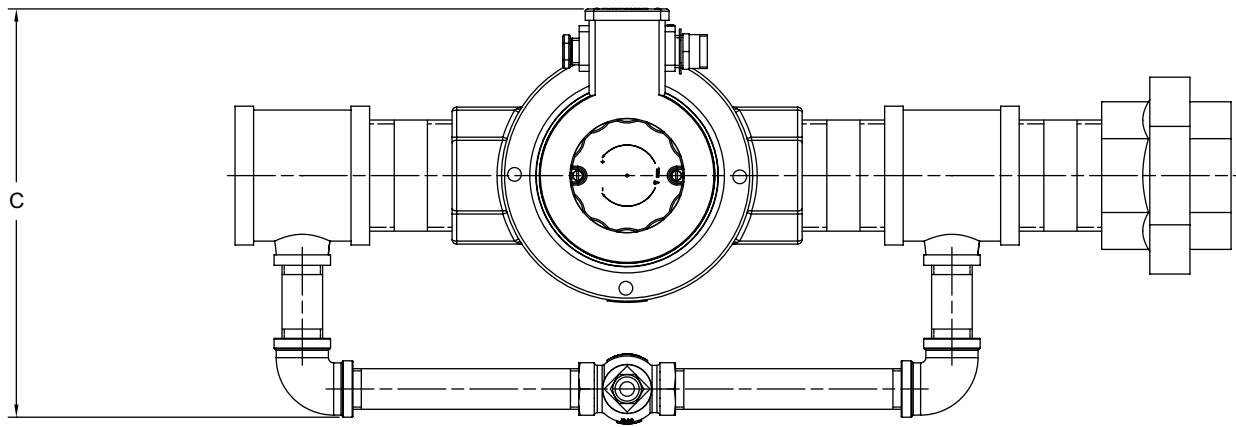
Part Number		Size	Flow Direction	Length A	Clearance Height B	Depth C	Weight, lbs (kg)
120V	230V						
10048931	10050450	40	Left to Right	439 (17.3)	196 (7.7)	172 (6.8)	7.6 (16.7)
10048935	10050453	40	Right to Left	439 (17.3)	196 (7.7)	172 (6.8)	7.6 (16.7)
10048932	10050451	50	Left to Right	461 (18.1)	230 (9.1)	190 (7.5)	11.9 (26.3)
10048936	10050454	50	Right to Left	461 (18.1)	230 (9.1)	190 (7.5)	11.9 (26.3)
10048933	10050452	65	Left to Right	654 (25.7)	654 (25.7)	273 (10.7)	23.8 (52.5)
10048937	10050455	65	Right to Left	654 (25.7)	654 (25.7)	273 (10.7)	23.8 (52.5)

Dimensions may vary 2% due to pipe thread engagement tolerances.

Sizes 40 to 50 (Left to Right Flow Shown)



Size 65 (Left to Right Flow Shown)





Offered By:

Power Equipment Company
2011 Williamsburg Road
Richmond, Virginia 23231
Phone (804) 236-3800
Fax (804) 236-3882

www.peconet.com